

Le Marche

Gualdo

6466: Casa Antonietta: two houses with 453 sqm of living space, outbuildings, and 4.5 ha of land in Le Marche, ideal for private use or tourism.

Prezzo: € 220.000



6466 Gualdo

Casa Antonietta is a charming property consisting of two houses sold together, set in the peaceful countryside near Gualdo in the beautiful region of Le Marche. The estate offers space, flexibility and excellent potential for both private use and hospitality projects.

The right-hand house, as seen from the field, was built in 1997 and has a total surface area of approximately 420 sqm, including outbuildings. The main house offers around 276 sqm of living space over three floors and is in excellent condition thanks to recent renovation works. It is currently divided into two spacious independent apartments, each with its own private entrance, GPL heating system and separate electricity meter. In total, the house offers 4 bedrooms and 3 bathrooms, making it ideal for a large family or for those seeking generous living space. Additional features include a cellar, storage areas and a large attic. The outbuildings measure approximately 139 sqm, and the land directly in front of the house extends to about 1.5 hectares.

The left-hand house, built in the same year and also recently renovated, offers approximately 177 sqm of living space. On the first floor there is a fully finished and habitable apartment, while the ground floor and additional spaces offer further potential. The outbuildings total approximately 199 sqm, and the property includes nearly 3 hectares of land.

In total, Casa Antonietta offers around 453 sqm of renovated, immediately habitable living space, 338 sqm of outbuildings, and approximately 4.5 hectares of land, providing a rare combination of space and versatility.

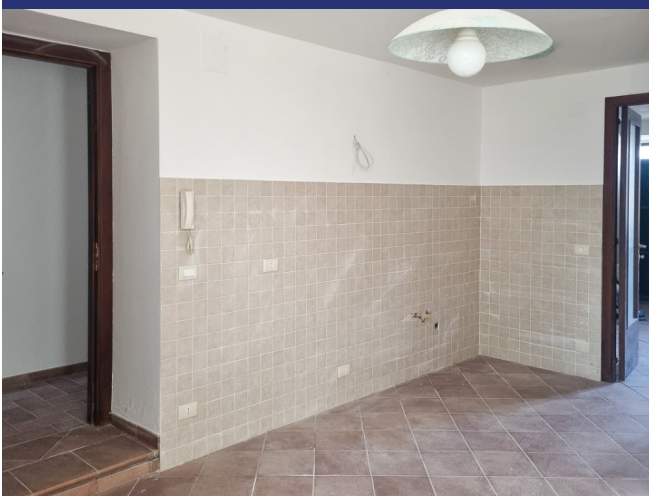
The property is easily accessible via a well-maintained municipal road and is located just a few kilometres from Gualdo. The motorway can be reached in approximately 15 minutes, while the Adriatic coast and the beaches of Civitanova Marche are only about 30 minutes away.

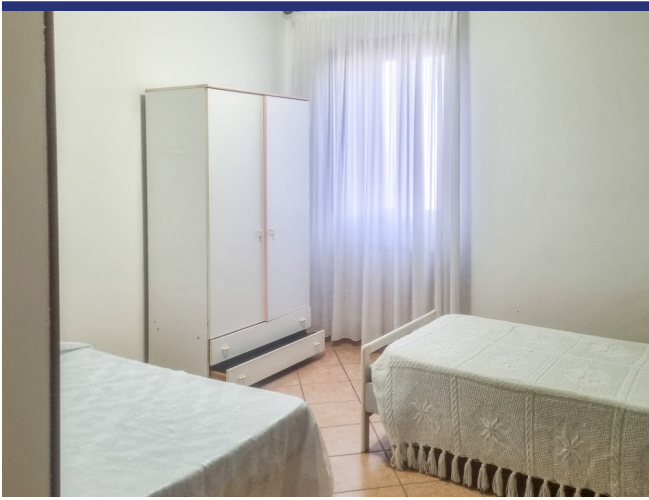
Thanks to its layout, size and location, this property is ideally suited for the development of a B&B, holiday rentals or an agriturismo, with the added potential for a small-scale camping or glamping business.

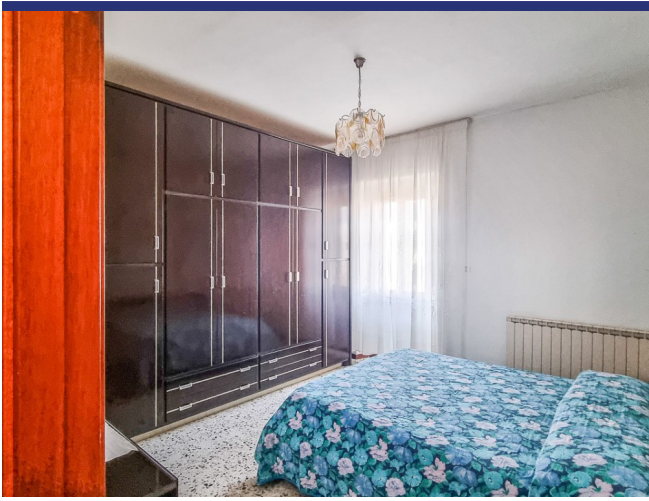


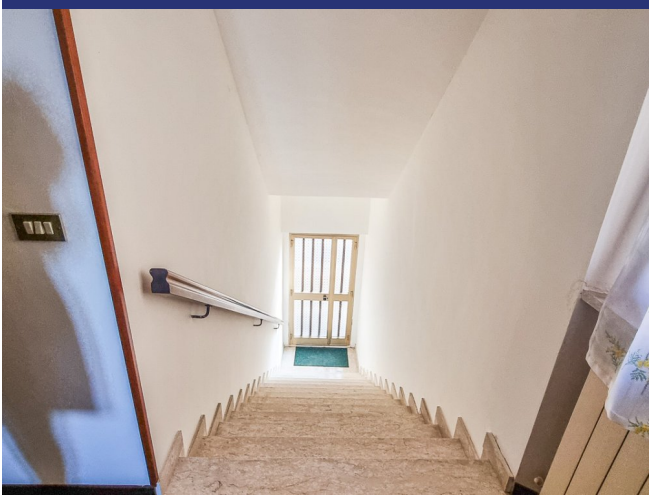
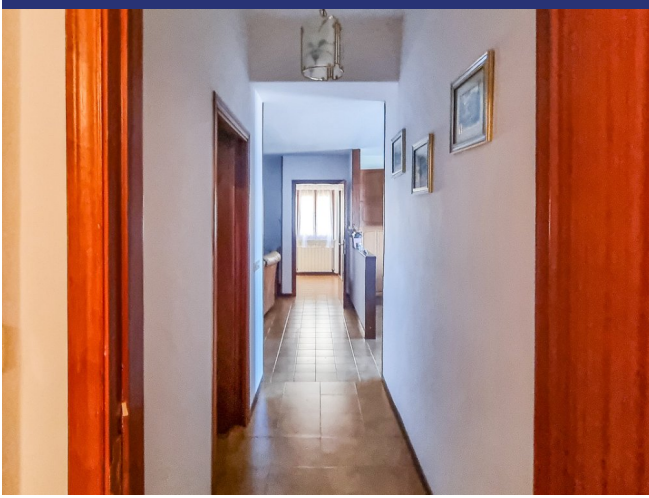














6466 Gualdo



- Riferimento: 6466
- Villa/Casale
- Vista panoramica
- 3 km dal paese
- Giardino
- Camino
- Garage: Parcheggio
- Guesthouse: Si
- Prezzo: € 220.000
- spazio abitabile: 453 m²
- Terreno: 45000 m²
- camere da letto: 6
- Bagni: 5
- Potenziale per l'affitto: Bene
- Condizione della proprietà: Restaurato
- Stato: Disponibile

