

Le Marche

Fermo

6522: Restored farmhouse with panoramic views, spacious portico and outbuilding in the heart of Le Marche.

Prezzo: € 615.000



6522 Fermo

Casa Sibilla is a beautifully restored traditional farmhouse in Le Marche, set within a stunning natural landscape with breathtaking views of the Sibillini Mountains, rolling hills, and charming medieval towns.

The property offers approximately 325 sqm of living space arranged over three floors and is surrounded by a fully fenced garden of around 2,500 sqm with mature trees and complete privacy. One of the most distinctive features of the property is the impressive 60 sqm covered portico, finished with antique terracotta tiles.

The ground floor of approximately 120 sqm comprises a spacious living room with fireplace and dining area, a kitchen, laundry and utility room, a study, and a bathroom. Large doors from the living area open directly onto the portico and garden.

An internal staircase leads to the first floor, which can also be accessed through the traditional external staircase typical of Marche farmhouses. This level offers an additional living area, three generous double bedrooms, including a master suite with en-suite bathroom, bathtub, shower, and walk-in wardrobe. A second bathroom serves the remaining bedrooms.

The second floor, a beautifully finished attic level, hosts a study, two additional bedrooms, and a bathroom. From this floor there is access to a spacious 35 sqm terrace with spectacular views across the surrounding countryside.

Beneath the tiled outdoor patio there is a cellar of approximately 10 sqm. The property also includes a detached outbuilding of around 90 sqm to be rebuilt, offering excellent potential as guest accommodation, a studio, garage, workshop, or additional living space.

The farmhouse was fully renovated by the current owner, with works completed in 2010. The finishes are of high quality throughout, including underfloor heating, double-glazed wooden windows, wooden shutters, and hand-painted internal doors. The entrance gates are electric and the entire property is fully fenced.

The villa is connected to electricity, mains water, and LPG gas. In addition, there is a well that remains active throughout the year and supplies water for the garden and irrigation system.

Positioned along a well-maintained country road, Casa Sibilla enjoys complete peace and privacy while remaining conveniently close to local amenities. The nearest supermarket is only 3 km away, while the historic town of Montegiorgio is just 2 km from the property. The beaches of Porto San Giorgio can be reached in approximately 30 minutes, and the ski resorts of the Sibillini Mountains are around 50 km away.

Thanks to its exceptional location between the sea, mountains, and historic villages, this property is perfectly suited as a private residence, a second home, or an exclusive rental investment in Le Marche.

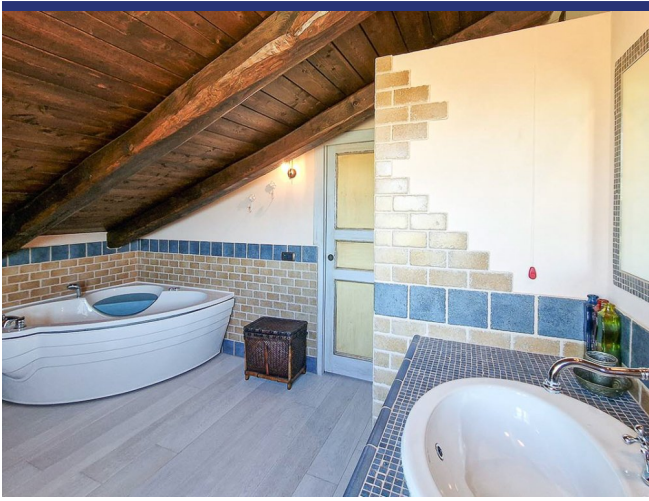






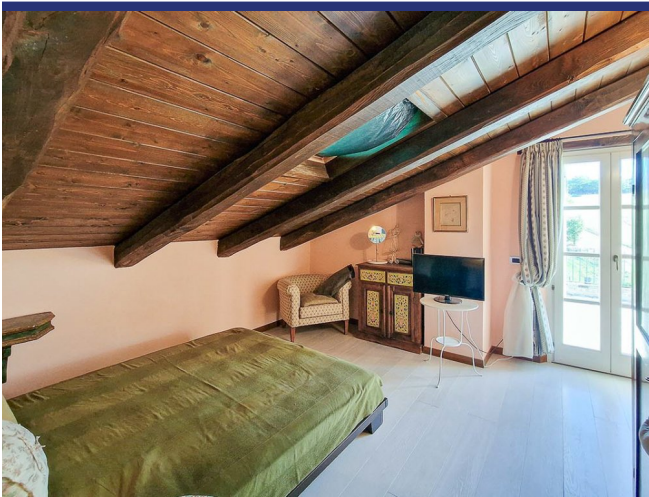
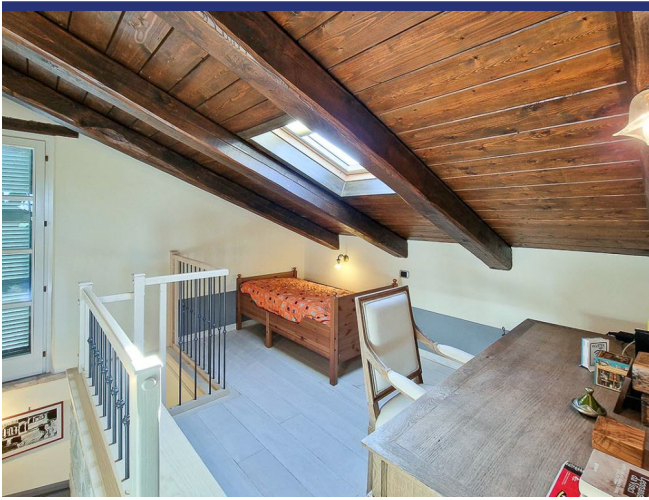








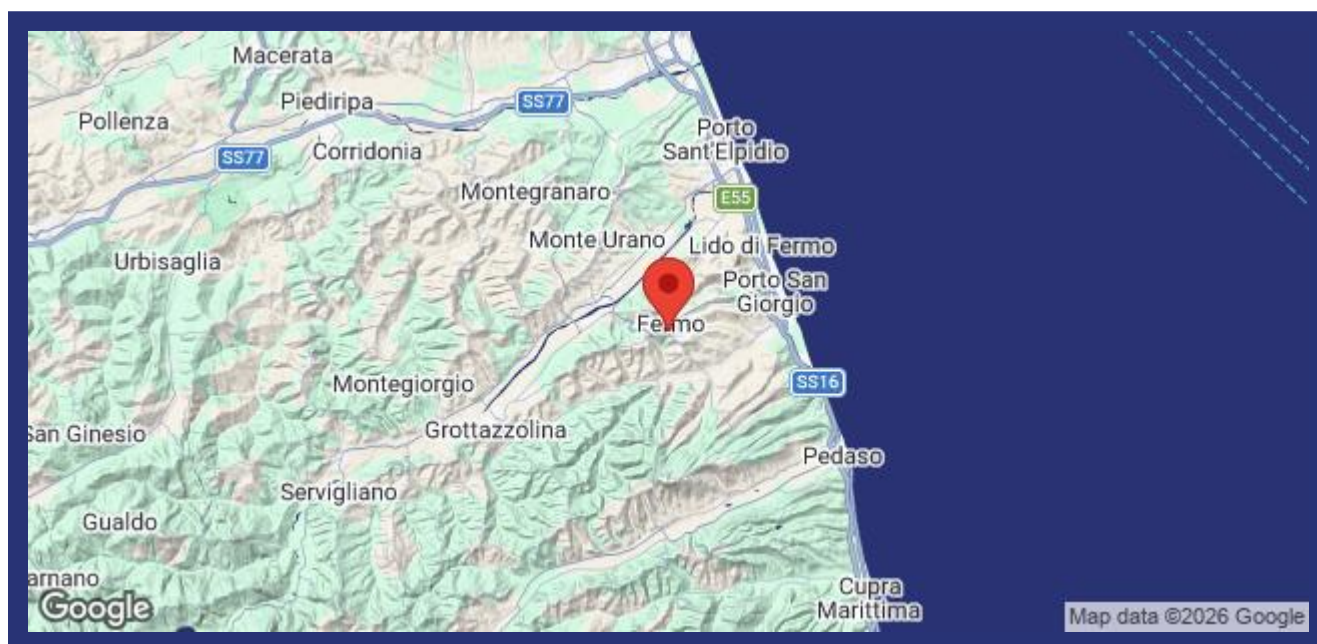








6522 Fermo



- Riferimento: 6522
- Villa/Casale
- Vista panoramica
- 30 km dal mare
- 3 km dal paese
- Giardino
- Terrazzo
- Balcone
- Riscaldamento
- Garage: Parcheggio
- Guesthouse: Da realizzare
- Prezzo: € 615.000
- spazio abitabile: 325 m²
- Terreno: 2500 m²
- camere da letto: 5
- Bagni: 4
- Potenziale per l'affitto: Molto bene
- Condizione della proprietà: Molto bene
- Stato: Disponibile

